











**HALL D
BUILDING 203
EMERGENCY PLAN**

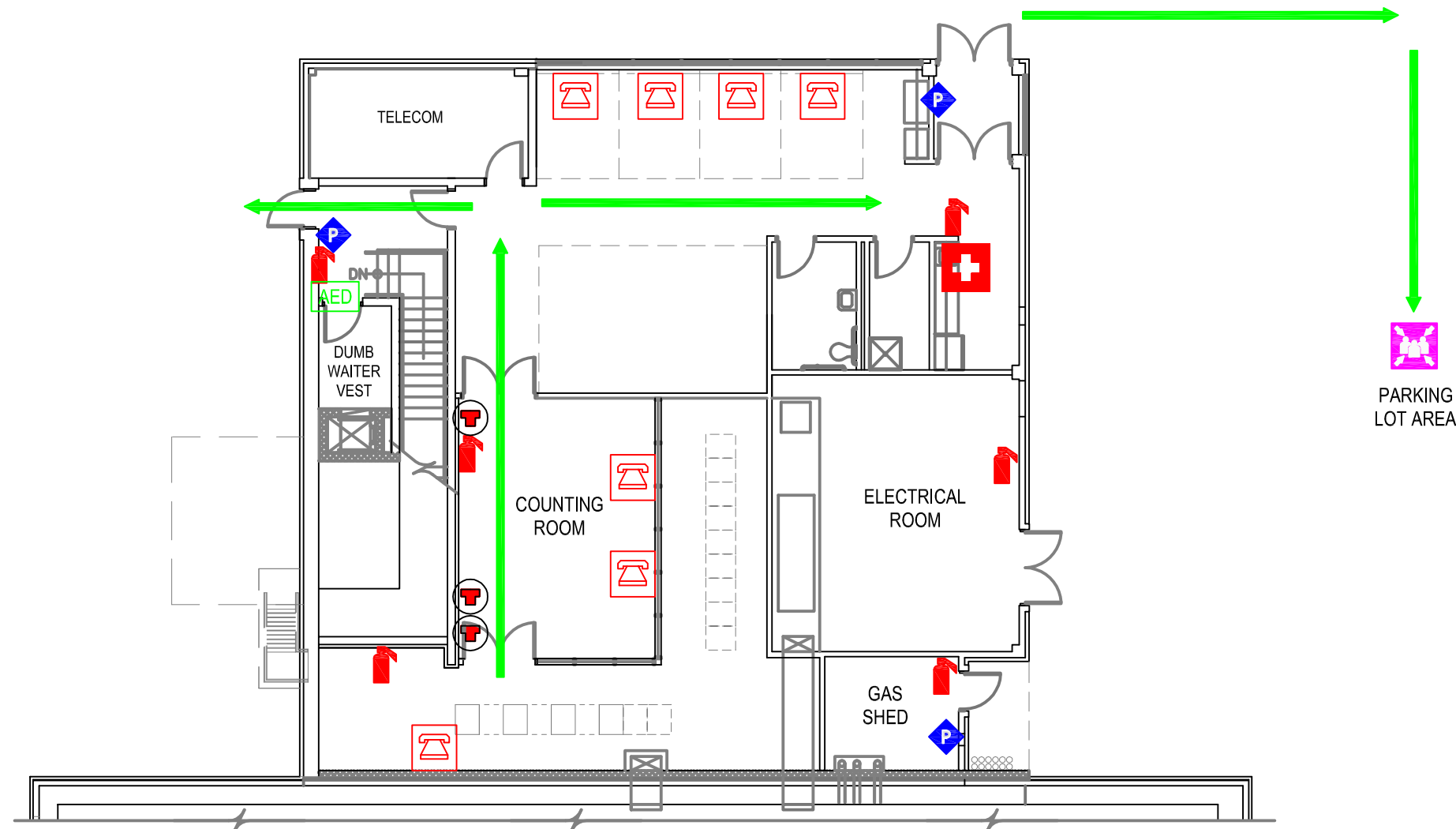
IN CASE OF FIRE:

- STAY CALM
- WALK, DO NOT RUN
- ACTIVATE NEAREST PULL BOX, FOLLOW ARROWS IN DIAGRAM, & MEET AT MUSTER POINT

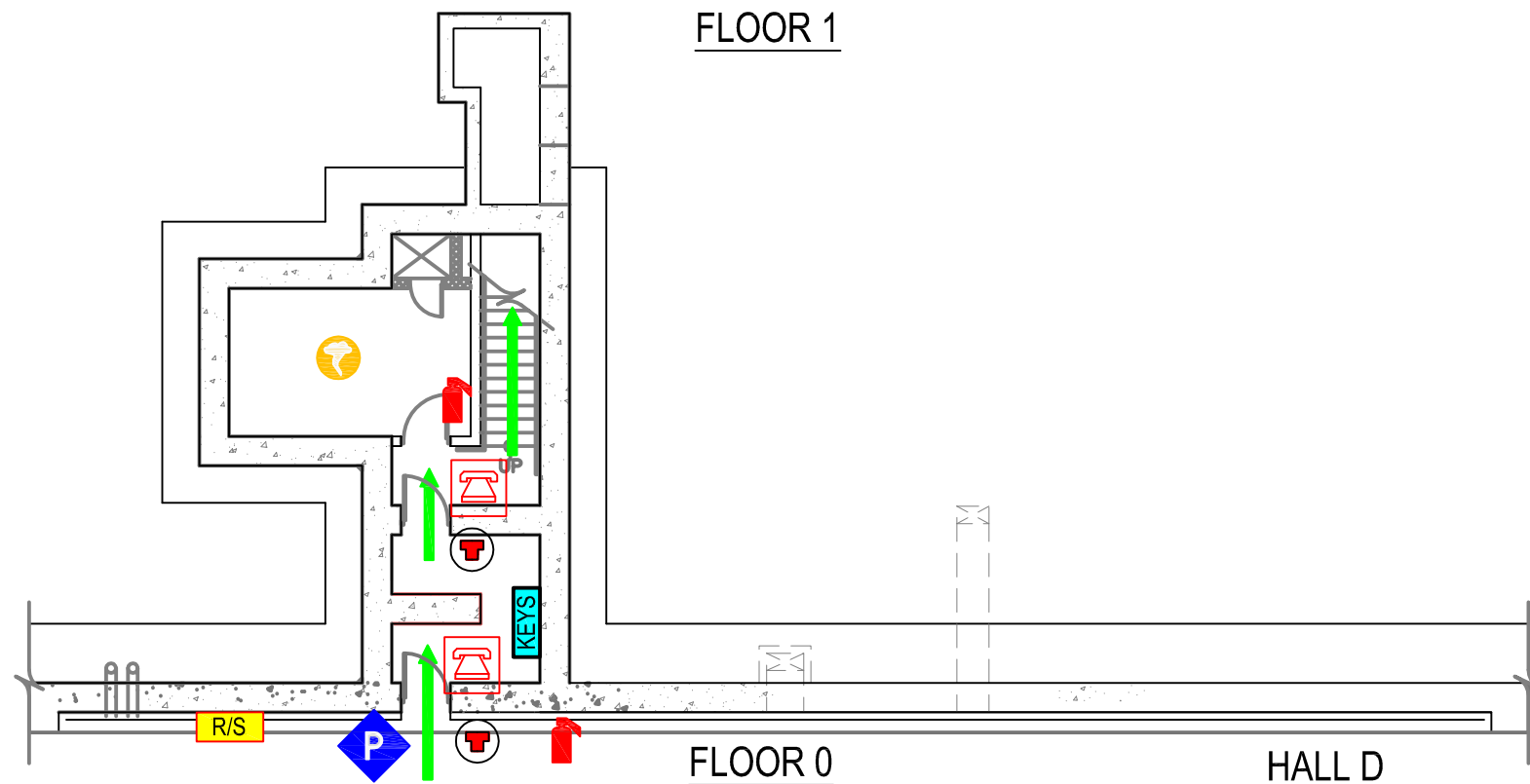
IN CASE OF SEVERE WIND:
IF A TORNADO WARNING IS ISSUED BY THE NATIONAL WEATHER SERVICE, AND JLAB IS WITHIN THE WARNING AREA, MOVE QUICKLY TO THE DESIGNATED SEVERE WIND "TAKE COVER" AREA.

- LEGEND**
-  EGRESS PATH
 -  FIRE EXTINGUISHER
 -  FIRE ALARM PULL STATION
 -  SEVERE WIND "TAKE COVER" AREA
 -  MUSTER POINT
 -  EMERGENCY STOP
 -  RUN/SAFE BOX
 -  TELEPHONE
 -  AUTOMATED EXTERNAL DEFIBRILLATOR
 -  FIRST AID

NOTE:
DETAILS FOR HALL D AND COUNTING HOUSE ARE SHOWN ON SEPARATE MAPS.



FLOOR 1



FLOOR 0

HALL D

PARKING LOT AREA

**COUNTING HOUSE
BUILDING 202, FLOOR 0 & 1
EMERGENCY PLAN**

- IN CASE OF FIRE:**
- STAY CALM
 - WALK, DO NOT RUN
 - ACTIVATE NEAREST PULL BOX, FOLLOW ARROWS IN DIAGRAM, & MEET AT MUSTER POINT

- IN CASE OF SEVERE WIND:**
IF A TORNADO WARNING IS ISSUED BY THE NATIONAL WEATHER SERVICE, AND JLAB IS WITHIN THE WARNING AREA, MOVE QUICKLY TO ONE OF THE DESIGNATED SEVERE WIND "TAKE COVER" AREAS.

- LEGEND**
- ➔ EGRESS PATH
 - 🔥 FIRE EXTINGUISHER
 - Ⓟ FIRE ALARM PULL STATION
 - 🟡 SEVERE WIND "TAKE COVER" AREA
 - 👥 MUSTER POINT
 - ⬆️ EMERGENCY EXIT
 - Ⓡ EMERGENCY STOP
 - 🔑 KEYS KEY ACCESS BANK
 - 🟡 R/S RUN/SAFE BOX
 - ☎️ TELEPHONE
 - 🟩 AED AUTOMATED EXTERNAL DEFIBRILLATOR
 - 🏠 FIRST AID

HALL D
BUILDING 203
EMERGENCY PLAN

IN CASE OF FIRE:

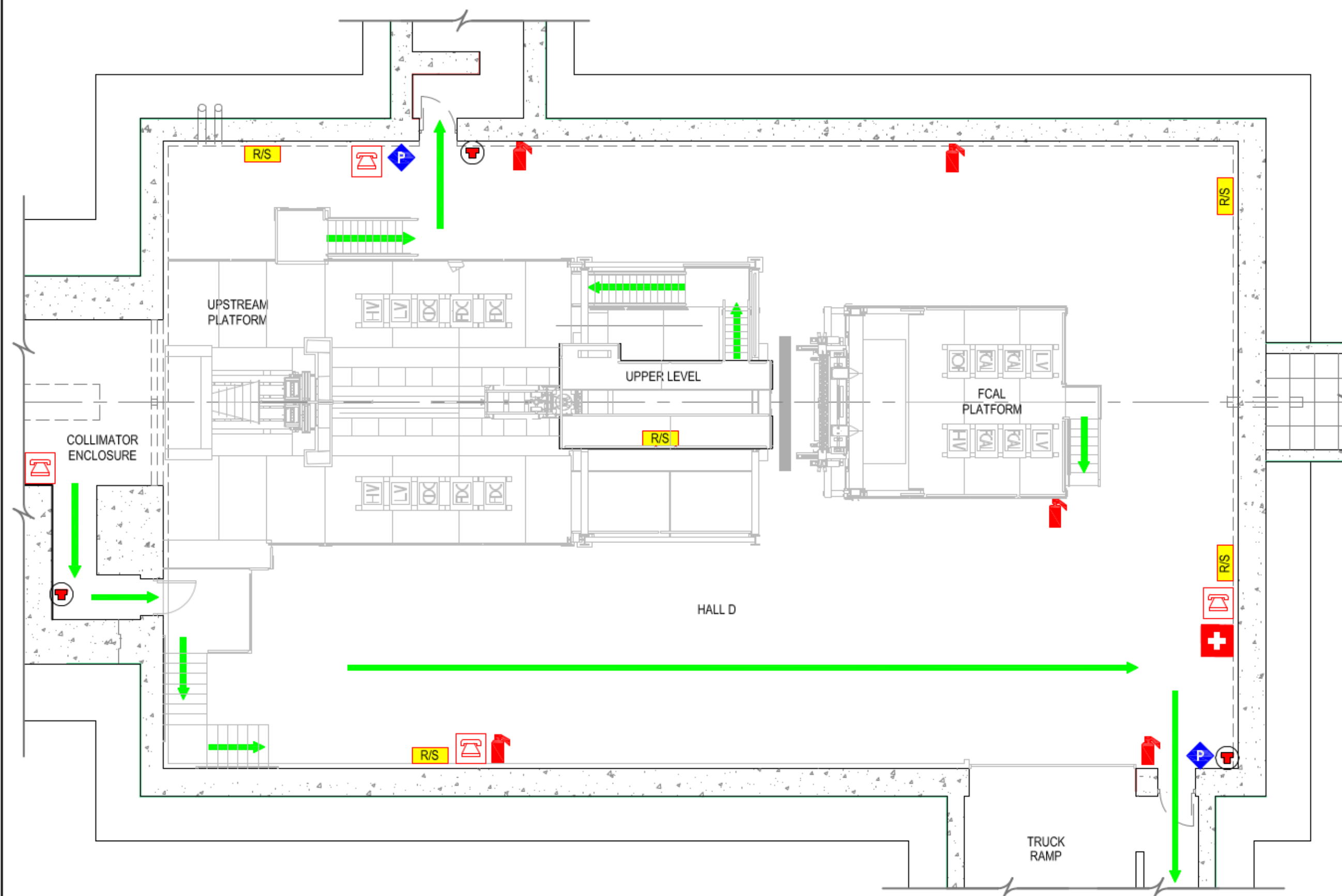
- STAY CALM
- WALK, DO NOT RUN
- ACTIVATE NEAREST PULL BOX, FOLLOW ARROWS IN DIAGRAM, & MEET AT MUSTER POINT

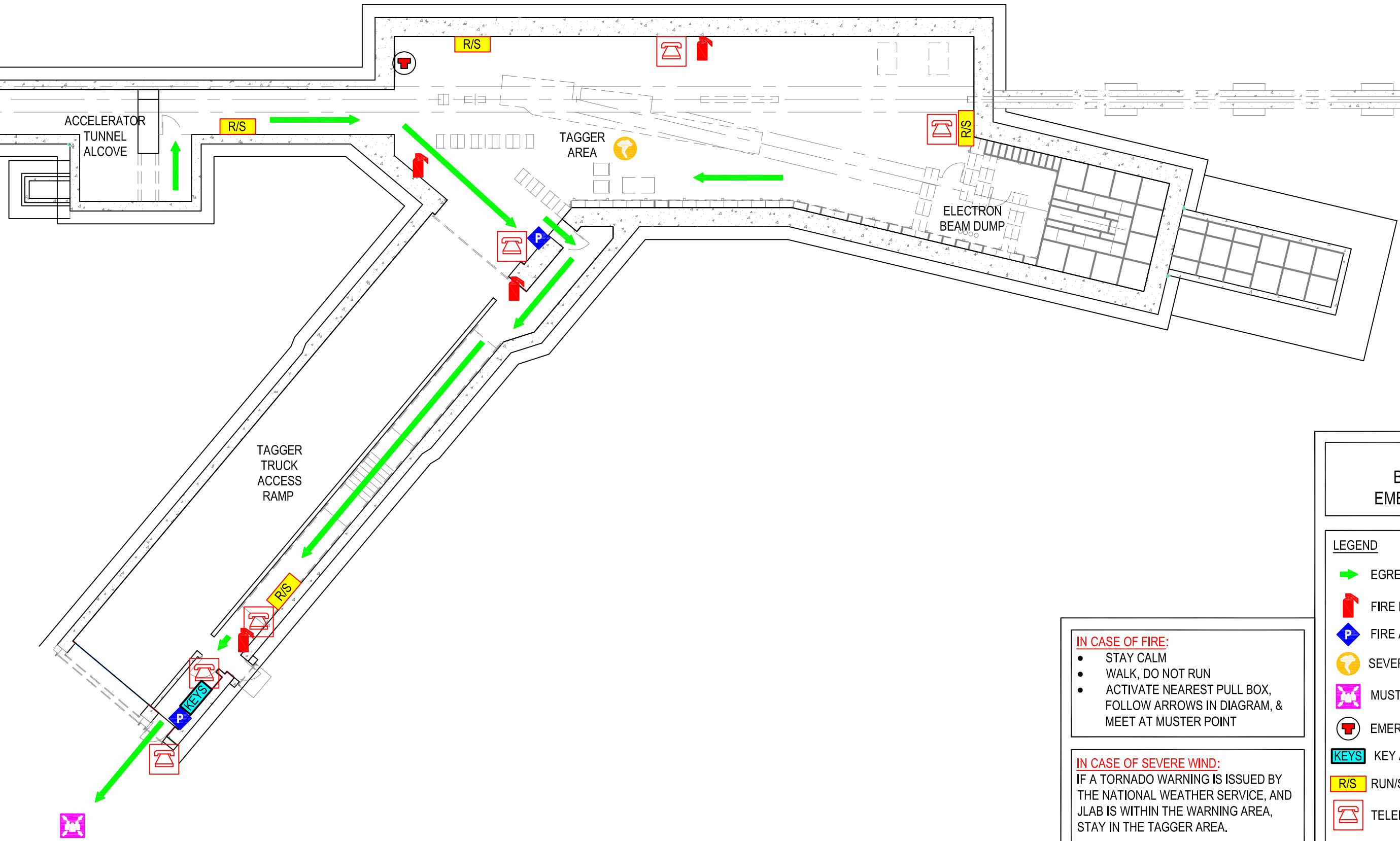
IN CASE OF SEVERE WIND:

IF A TORNADO WARNING IS ISSUED BY THE NATIONAL WEATHER SERVICE, AND JLAB IS WITHIN THE WARNING AREA, MOVE QUICKLY TO ONE OF THE DESIGNATED SEVERE WIND "TAKE COVER" AREAS.








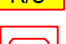

LEGEND

- ➔ EGRESS PATH
- 🔥 FIRE EXTINGUISHER
- 📞 FIRE ALARM PULL STATION
- 🌪️ SEVERE WIND "TAKE COVER" AREA
- 👤 MUSTER POINT
- 🛑 EMERGENCY STOP
- 🔑 KEYS KEY ACCESS BANK
- 📦 R/S RUN/SAFE BOX
- ☎️ TELEPHONE
- 🏥 FIRST AID





**TAGGER
BUILDING 204
EMERGENCY PLAN**

- LEGEND**
-  EGRESS PATH
 -  FIRE EXTINGUISHER
 -  FIRE ALARM PULL STATION
 -  SEVERE WIND "TAKE COVER" AREA
 -  MUSTER POINT
 -  EMERGENCY STOP
 -  KEY ACCESS BANK
 -  RUN/SAFE BOX
 -  TELEPHONE

IN CASE OF FIRE:

- STAY CALM
- WALK, DO NOT RUN
- ACTIVATE NEAREST PULL BOX, FOLLOW ARROWS IN DIAGRAM, & MEET AT MUSTER POINT

IN CASE OF SEVERE WIND:
IF A TORNADO WARNING IS ISSUED BY THE NATIONAL WEATHER SERVICE, AND JLAB IS WITHIN THE WARNING AREA, STAY IN THE TAGGER AREA.