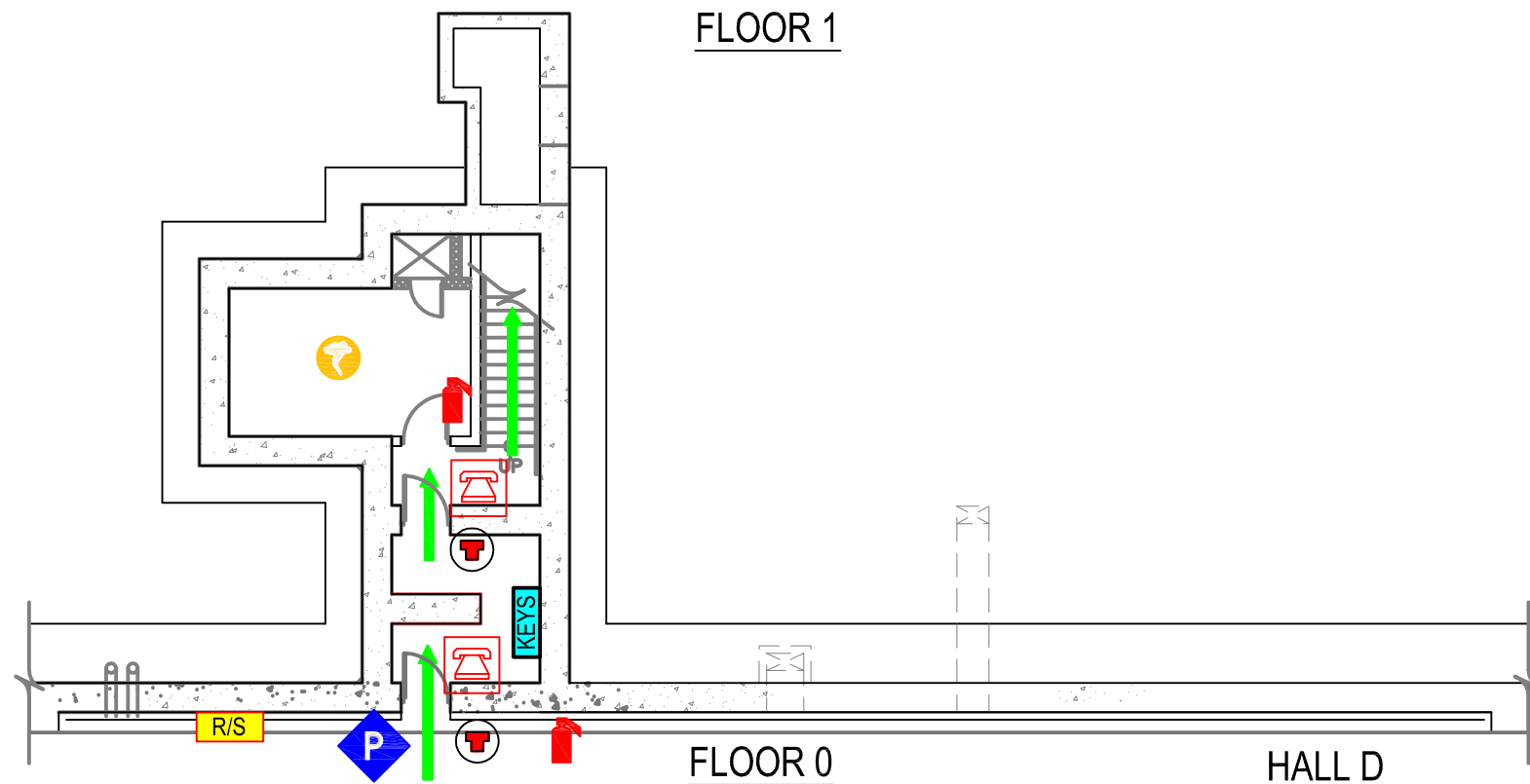


FLOOR 1



**COUNTING HOUSE
BUILDING 202, FLOOR 0 & 1
EMERGENCY PLAN**

- IN CASE OF FIRE:**
- STAY CALM
 - WALK, DO NOT RUN
 - ACTIVATE NEAREST PULL BOX, FOLLOW ARROWS IN DIAGRAM, & MEET AT MUSTER POINT

- IN CASE OF SEVERE WIND:**
IF A TORNADO WARNING IS ISSUED BY THE NATIONAL WEATHER SERVICE, AND JLAB IS WITHIN THE WARNING AREA, MOVE QUICKLY TO ONE OF THE DESIGNATED SEVERE WIND "TAKE COVER" AREAS.

- LEGEND**
- ➔ EGRESS PATH
 - 🔥 FIRE EXTINGUISHER
 - Ⓟ FIRE ALARM PULL STATION
 - 🌀 SEVERE WIND "TAKE COVER" AREA
 - 👥 MUSTER POINT
 - ⬆️ EMERGENCY EXIT
 - Ⓡ EMERGENCY STOP
 - KEYS KEY ACCESS BANK
 - R/S RUN/SAFE BOX
 - ☎ TELEPHONE
 - AED AUTOMATED EXTERNAL DEFIBRILLATOR
 - 🏠 FIRST AID