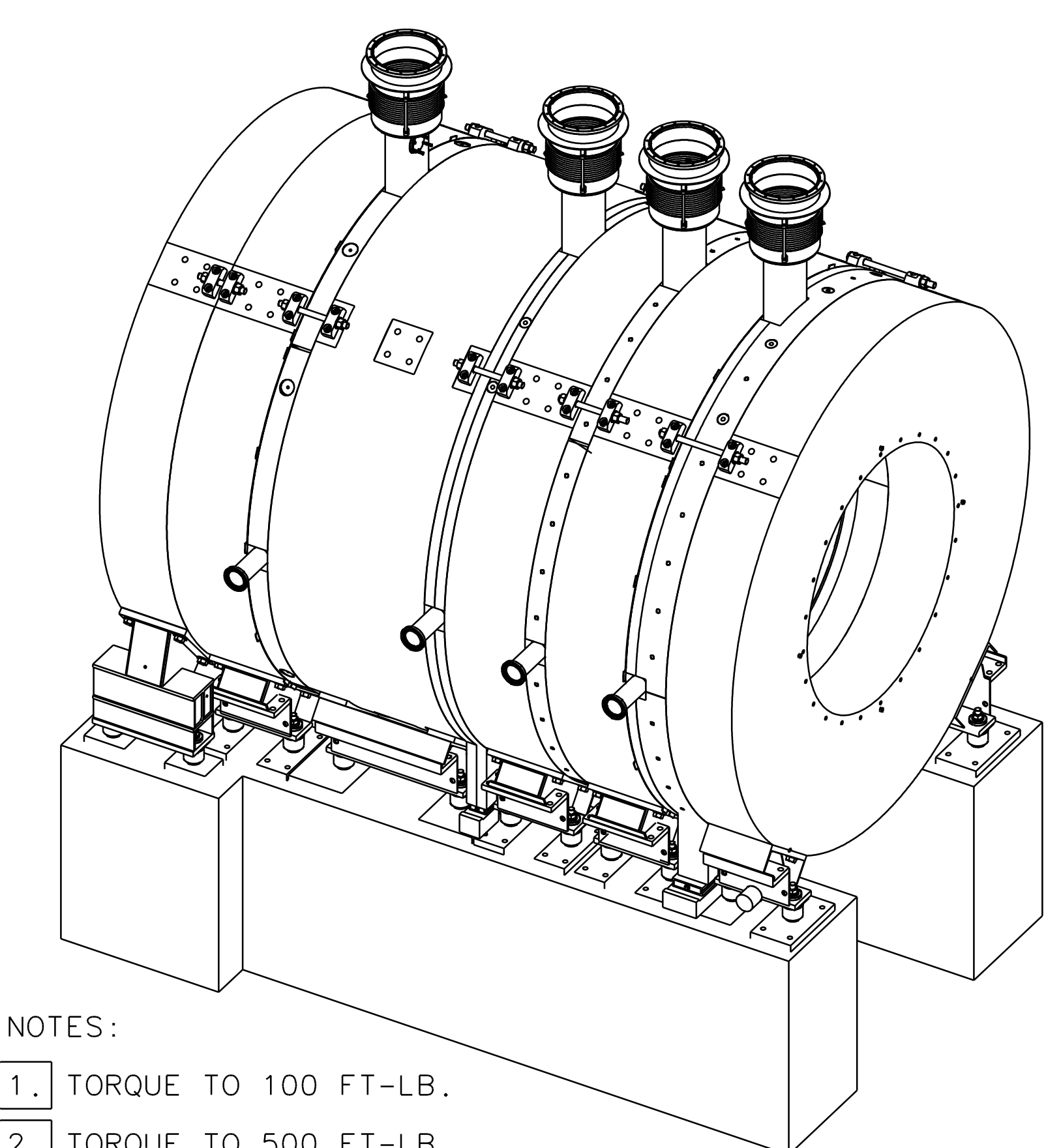
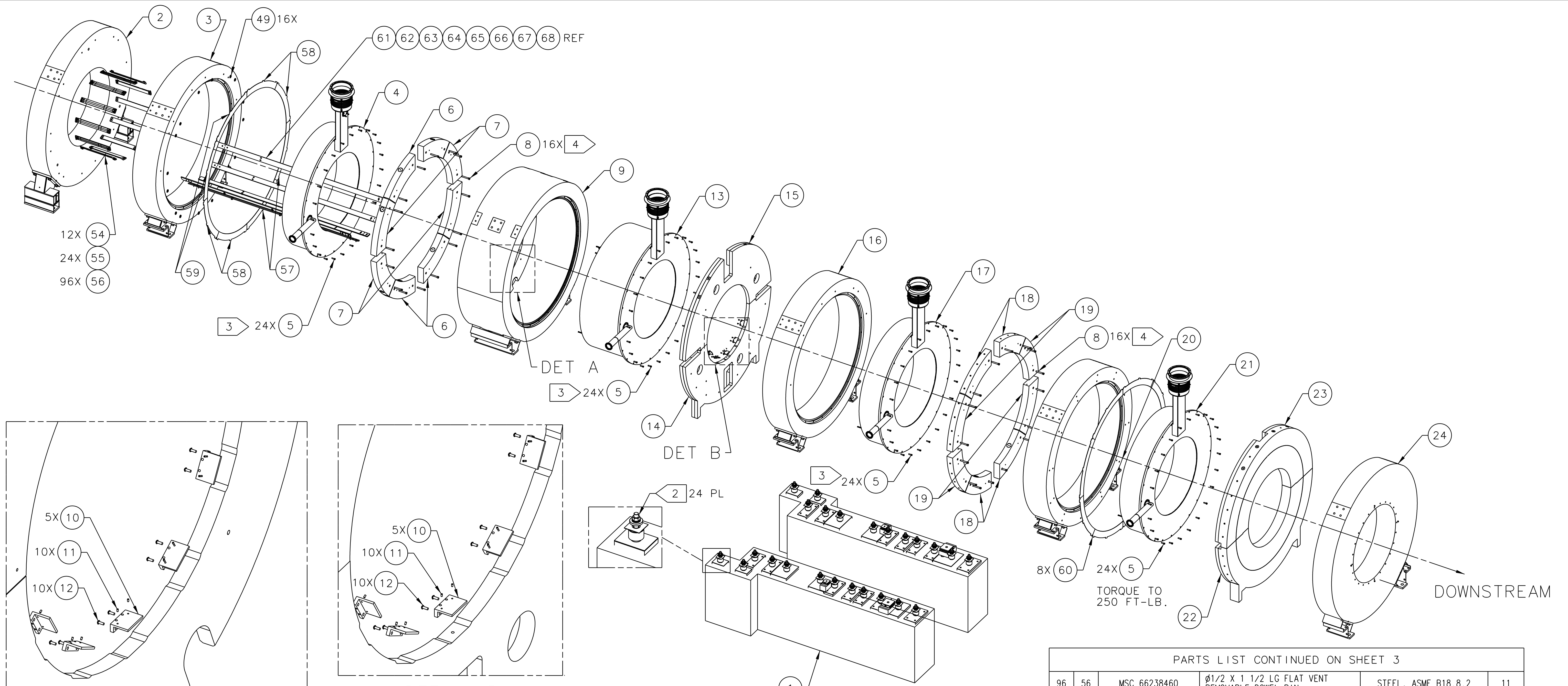
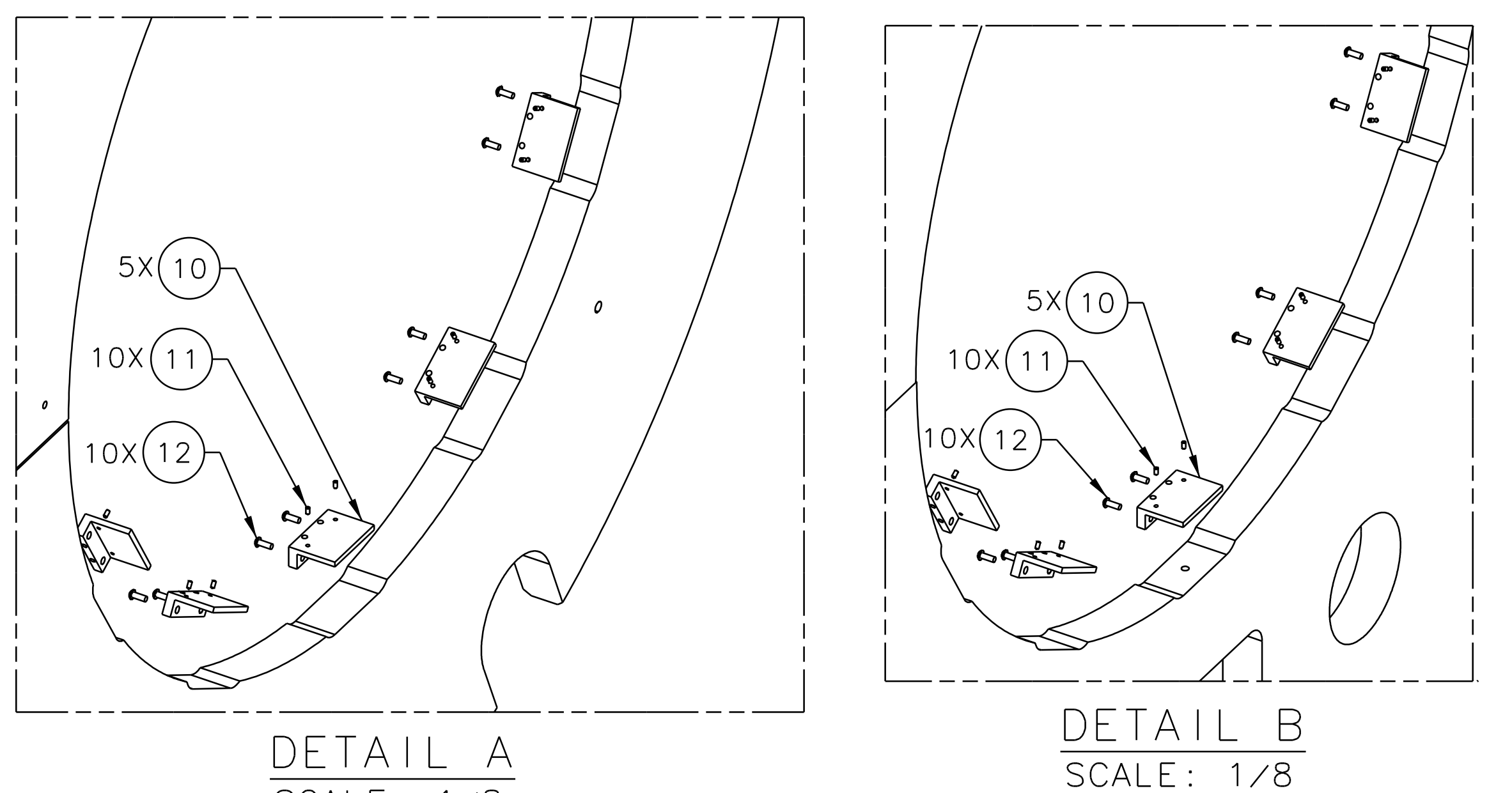


REVISION HISTORY				
ZONE	REV	DESCRIPTION	DATE	APPROVED
-	B	SEE PREVIOUS REV FOR HISTORY.	11 JUN 12	
SH3-66	C	CHANGED GROUT NOTE TO SHIM & WELDING DETAILS.		D. RATH
SH3-68		ADDED RAIL LOCATION DIMENSION. F0153MR13		T. WHITLACH

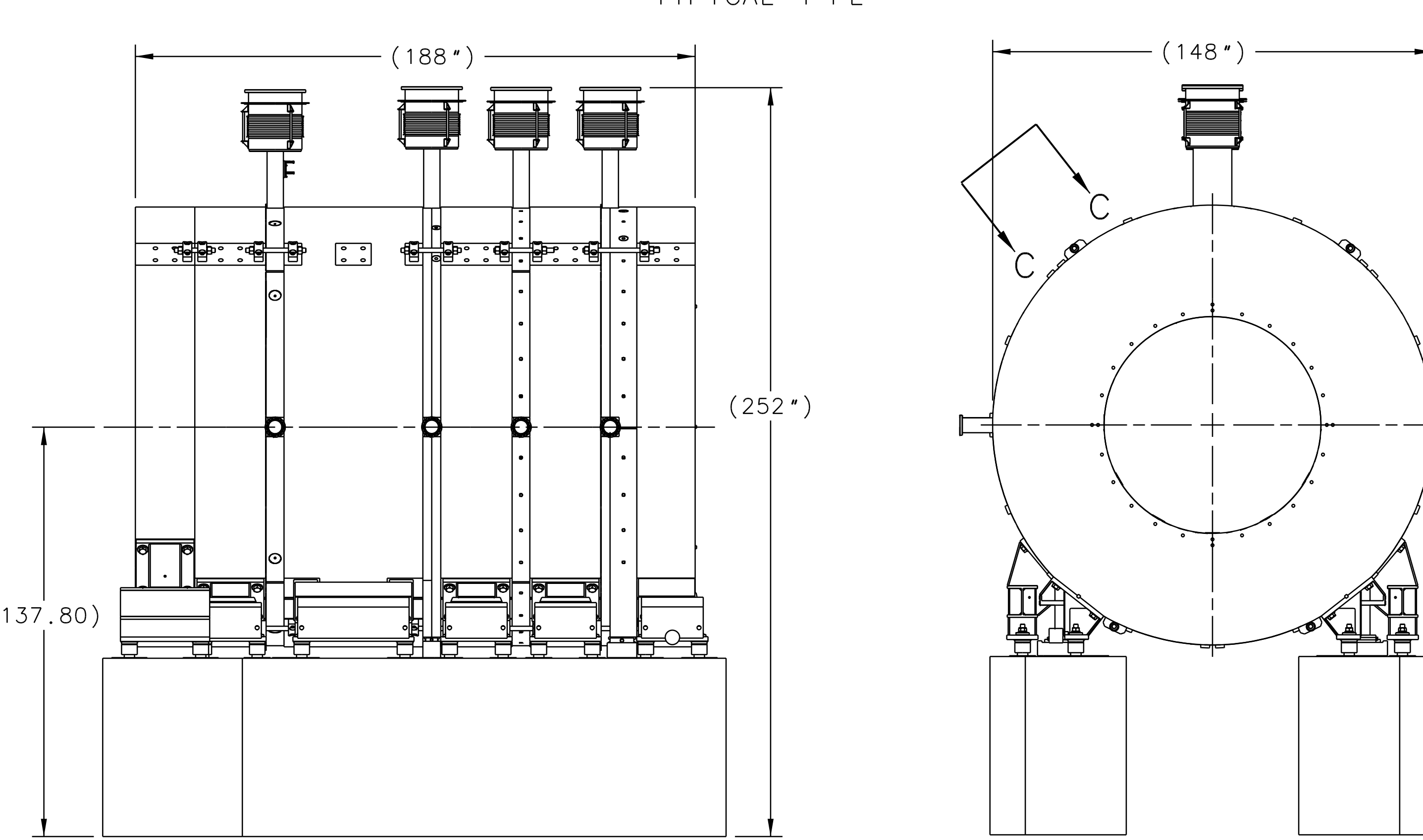
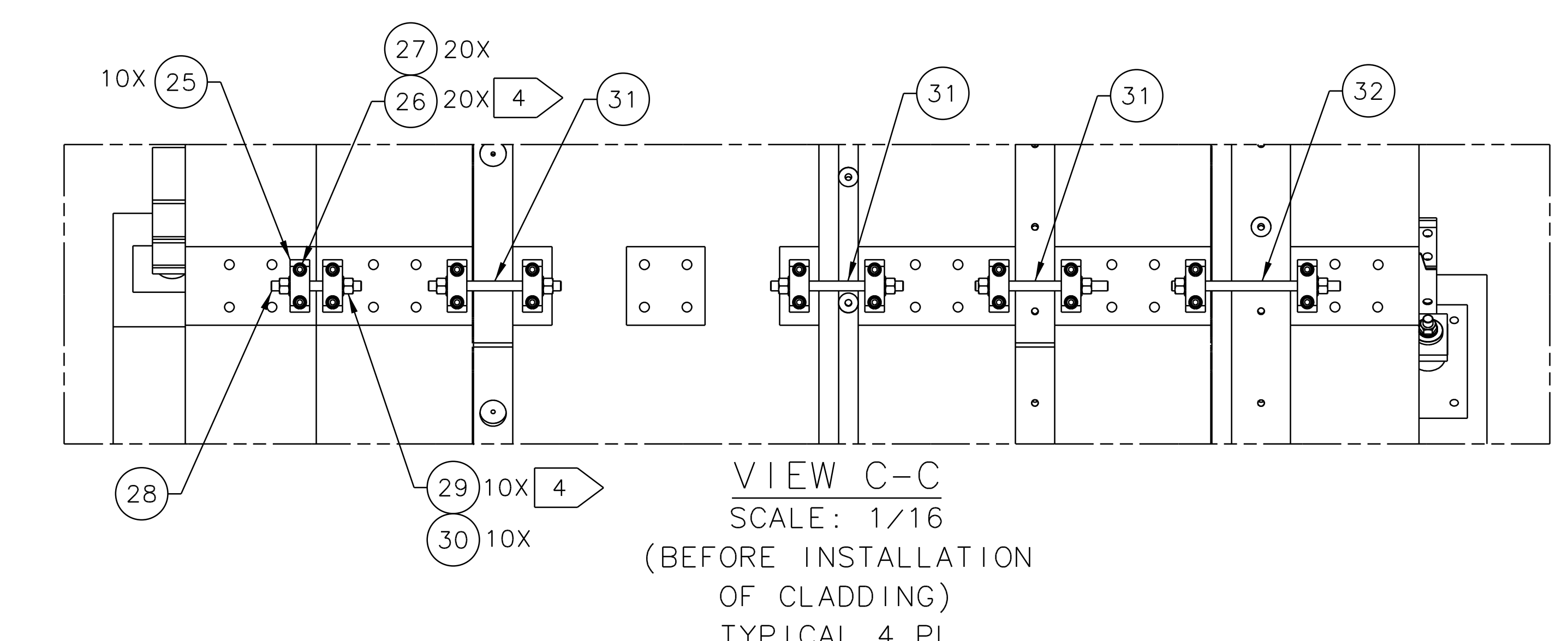


- NOTES:
- TORQUE TO 100 FT-LB.
  - TORQUE TO 500 FT-LB.
  - TORQUE TO 275 FT-LB.
  - TORQUE TO 350 FT-LB.
  - ALIGN SOLENOID TO ±2mm OF IDEAL BEAM. YOKE-TO-YOKE ALIGNMENT SHALL BE WITHIN ±1mm.
  - INSTALL IN ACCORDANCE WITH STATEMENT OF WORK D00000-04-02-S007 AND D00000-04-02-S008.
- (NOTES CONTINUED ON SHEET 3)



PARTS LIST CONTINUED ON SHEET 3

QTY	ITEM NO.	PART OR IDENTIFYING NO.	NOMENCLATURE OR DESCRIPTION	PARTS LIST	MATERIAL	QTY	ITEM NO.	PART OR IDENTIFYING NO.	NOMENCLATURE OR DESCRIPTION	PARTS LIST	MATERIAL
96	56	MSC 66238460	Ø1/2 X 1 1/2 LG FLAT VENT REMOVABLE DOWEL PIN		STEEL, ASME B18.8.2	11					
24	55	MSC 60619160	1/2-13 UNC X 1 1/2 LG HEX SOCKET FLAT HEAD CAP SCREW		ALLOY STEEL, GRADE 8 BLACK OXIDE	11					
12	54	D00000-04-02-2155	BAFFLE REINFORCEMENT STRAP			80	27		1.00 WASHER 1.75 OD		STEEL
18	53				STEEL - GRADE 8	24	26	ASTM A574 OR EQUIV.	1.00-8 X 3.00 LG SOCKET HEAD CAP SCREW		STEEL - BLACK OXIDE
36	52	GRADE 5 OR HIGHER	1.00-8 HEX NUT		STEEL - BLACK OXIDE	40	25	D00000-13-13-2038	YOKE TURNBUCKLE BLOCK		
18	51		1.00-8 X 11.0 LG ALL THREAD		CARBON STEEL - GRADE 5	1	24	D00000-04-02-1055	ENDPLT - FOOT ASSY - DOWNSTREAM		
56	50	ASTM A574 OR EQUIV.	1.00-8 X 5.00 LG SOCKET HEAD CAP SCREW		STEEL - BLACK OXIDE	1	23	D00000-04-02-1061	TOP BAF BCAL ENDPLT SPT ASSY		
104	49		1.00 WASHER 2.50 OD		STEEL - GRADE 8	1	22	D00000-04-02-1060	BOT BAF BCAL ENDPLT SPT ASSY		
28	48	ASTM A574 OR EQUIV.	1.00-8 X 4.00 LG SOCKET HEAD CAP SCREW		STEEL - BLACK OXIDE	1	21	D00000-04-02-1043	COIL 4 CRYOSTAT ASSEMBLY		
1	47	D00000-07-00-1004	SOLENOID CLADDING ASSY FIXTURE			1	20	D00000-04-02-1059	YOKE #4 - FOOT WELDMENT ASSY		
1	46	D00000-04-02-2152	CLADDING OUTER TOP BEAM RIGHT			4	19	D00000-04-02-2125	45 DEG FILLER VACUUM DOWNSTREAM		
1	45	D00000-04-02-2151	CLADDING INNER TOP BEAM LEFT			4	18	D00000-04-02-2124	45 DEG FILLER CHIMNEY DOWNSTREAM		
1	44	D00000-04-02-2150	CLADDING OUTER UPPER BEAM RIGHT			1	17	D00000-04-02-1042	COIL 3 CRYOSTAT ASSEMBLY		
1	43	D00000-04-02-2149	CLADDING OUTER UPPER BEAM LEFT			1	16	D00000-04-02-1058	YOKE #3 - FOOT WELDMENT ASSY		
1	42	D00000-04-02-2148	CLADDING OUTER LOWER BEAM RIGHT			1	15	D00000-04-02-1024	TOP BAFFLE BCAL SPT ASSY		
1	41	D00000-04-02-2147	CLADDING OUTER LOWER BEAM LEFT			1	14	D00000-04-02-1023	BOTTOM BAFFLE BCAL SPT ASSY		
1	40	D00000-04-02-2146	CLADDING OUTER BOTTOM			1	13	D00000-04-02-1016	COIL 1 CRYOSTAT ASSEMBLY		
1	39	D00000-04-02-2145	CLADDING INNER TOP BEAM RIGHT			20	12	ASTM F835 OR EQUIV.	.375-16 X 1.50 LG BUTTON HEAD CAP SCREW		STEEL - BLACK OXIDE
1	38	D00000-04-02-2144	CLADDING INNER TOP BEAM LEFT			20	11	ASTM F912 OR EQUIV.	.25-28 X .50 LG SOCKET SET SCREW		STEEL - BLACK OXIDE
1	37	D00000-04-02-2143	CLADDING INNER UPPER BEAM RIGHT			10	10	D00000-04-02-2048	RAIL CLEAT - BCAL		
1	36	D00000-04-02-2142	CLADDING INNER UPPER BEAM LEFT			1	9	D00000-04-02-1056	YOKE #1 - FOOT WELDMENT ASSY		
1	35	D00000-04-02-2141	CLADDING INNER LOWER BEAM RIGHT			32	8	ASTM A574 OR EQUIV.	1.00-8 X 7.00 LG SOCKET HEAD CAP SCREW		STEEL - BLACK OXIDE
1	34	D00000-04-02-2140	CLADDING INNER LOWER BEAM LEFT			4	7	D00000-04-02-2030	45 DEG FILLER VACUUM		
1	33	D00000-04-02-2139	CLADDING INNER BOTTOM			4	6	D00000-04-02-2029	45 DEG FILLER CHIMNEY		
4	32		1.50-6 ALL THREAD 25.75 LG		CARBON STEEL	96	5	ASTM A574 OR EQUIV.	.75-10 X 2.50 LG SOCKET HEAD CAP SCREW		STEEL - BLACK OXIDE
12	31		1.50-6 ALL THREAD 20.25 LG		CARBON STEEL	1	4	D00000-04-02-1029	COIL 2 CRYOSTAT ASSY		
40	30		1.50 WASHER 3.00 OD		STEEL	1	3	D00000-04-02-1057	YOKE #2 - FOOT WELDMENT ASSY		
40	29	GRADE 5 OR HIGHER	1.50-6 HEX NUT		STEEL	1	2	D00000-04-02-1054	ENDPLATE - FOOT ASSY - UPSTREAM		
4	28		1.50-6 ALL THREAD 13.75 LG		STEEL - BLACK OXIDE	1	1	D00000-04-02-1064	SOLENOID PIER ASSEMBLY		



UNITED STATES DEPARTMENT OF ENERGY

Jefferson Lab  
Thomas Jefferson National Accelerator Facility

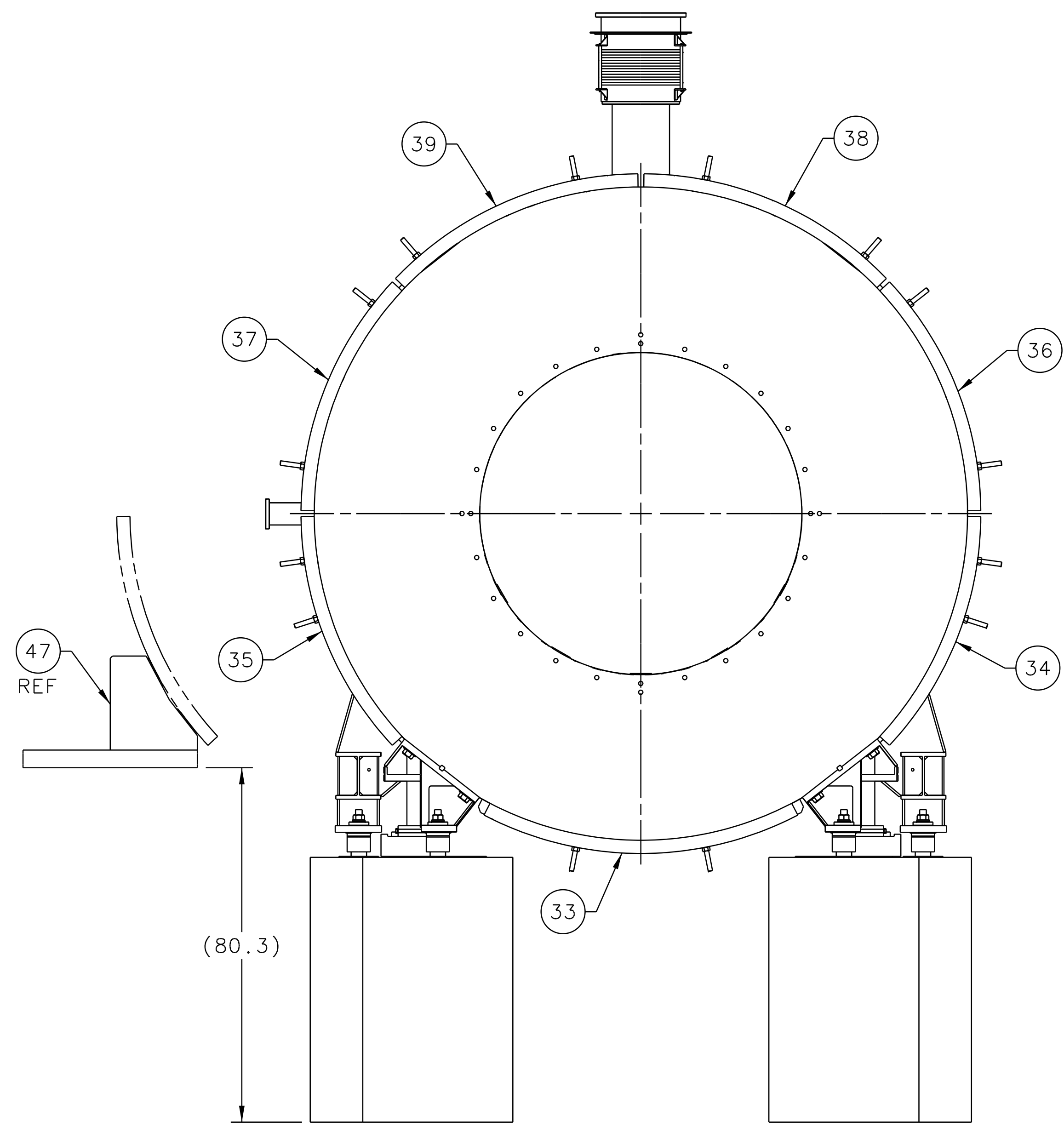
HALL D-GLUEX  
MAGNET  
SOLENOID  
SOLENOID MAGNET ASSEMBLY

SCALE: NTS  
DRAWING NO: D00000-04-02-1000  
SHEET 1 OF 3

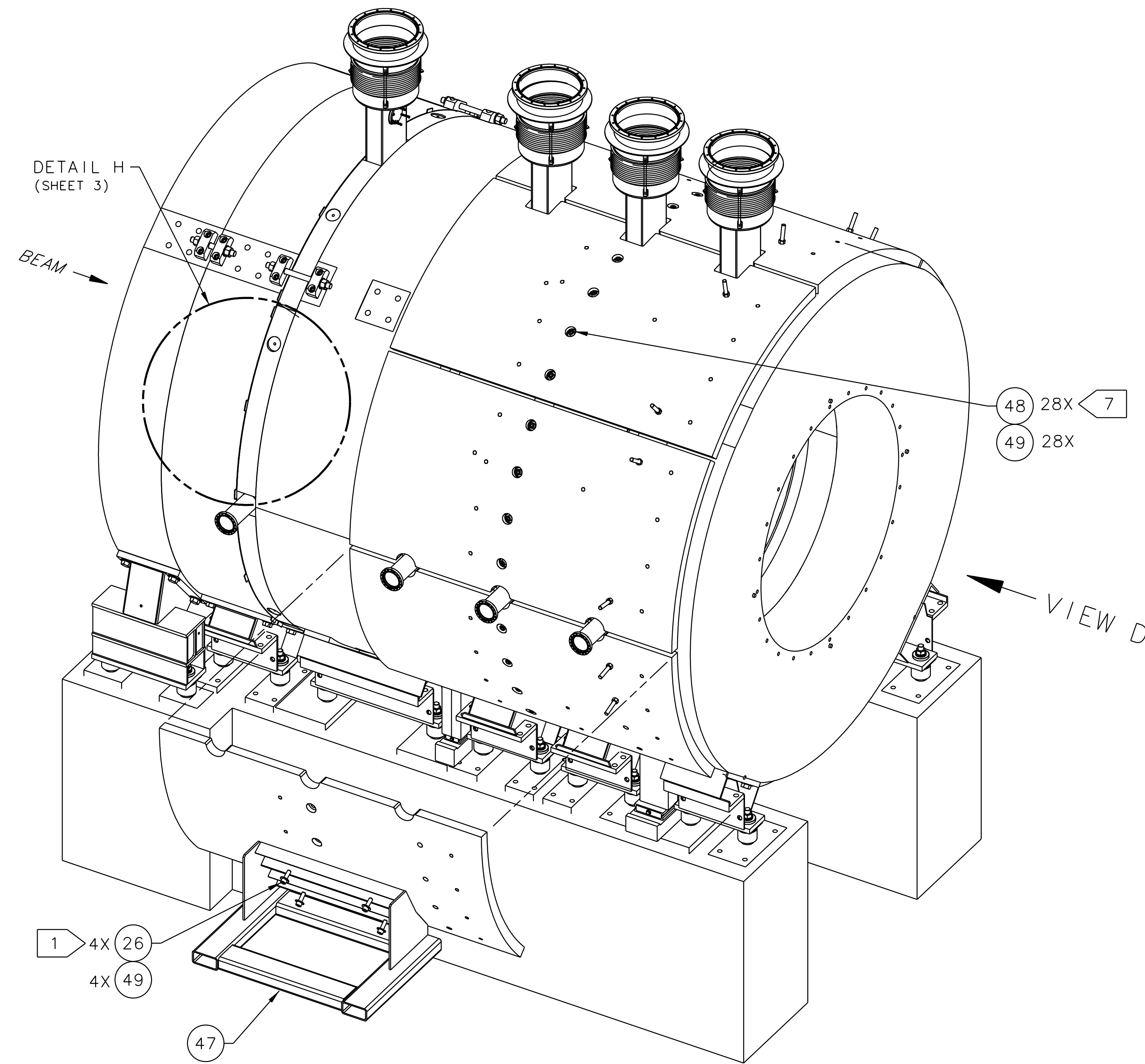
APPROVED: J. BALLARD, 13SEP11  
APPROVED: C. BIALLAS, 09/13/11

DATE: 09SEP11

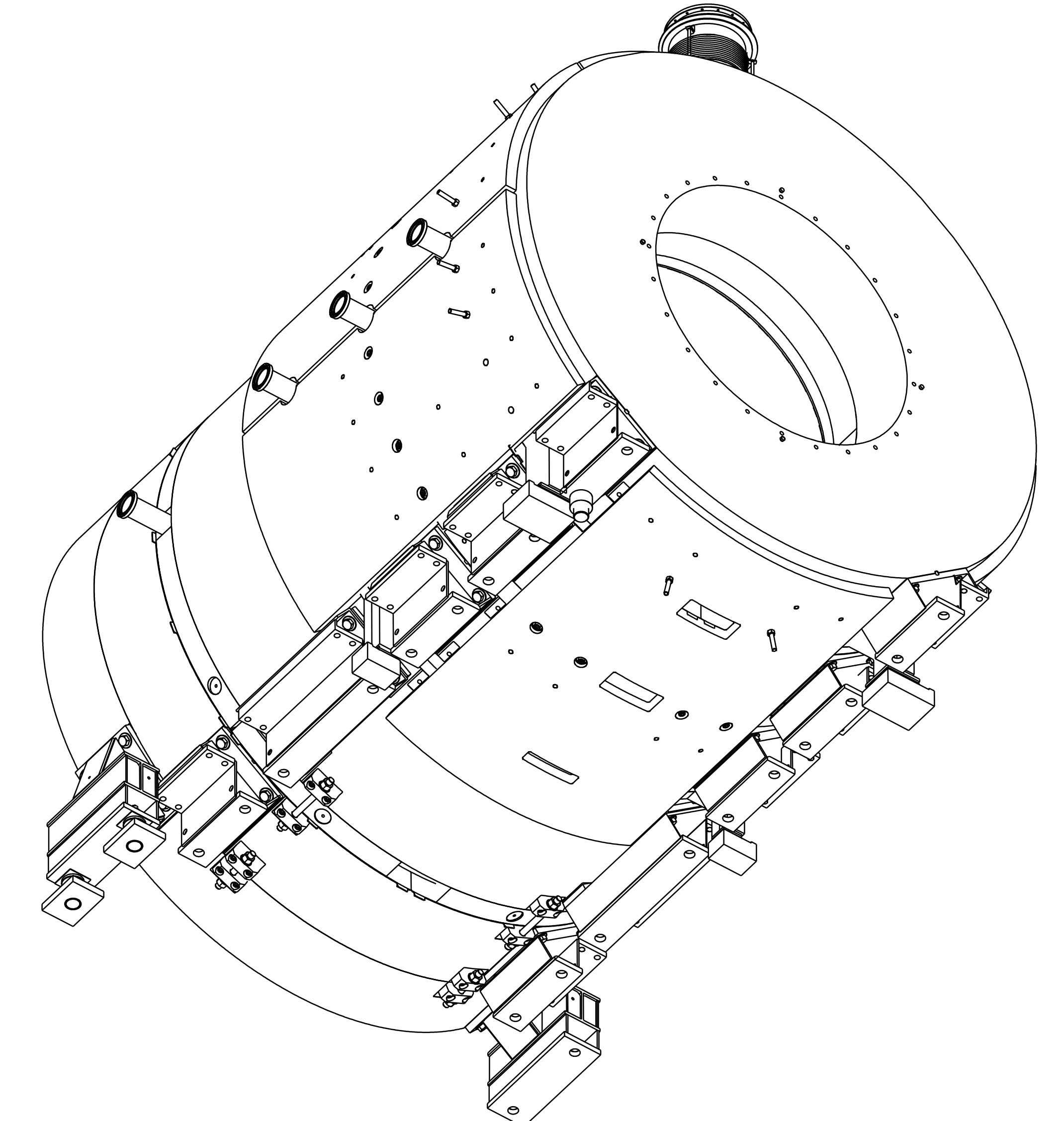
SCALE: NTS



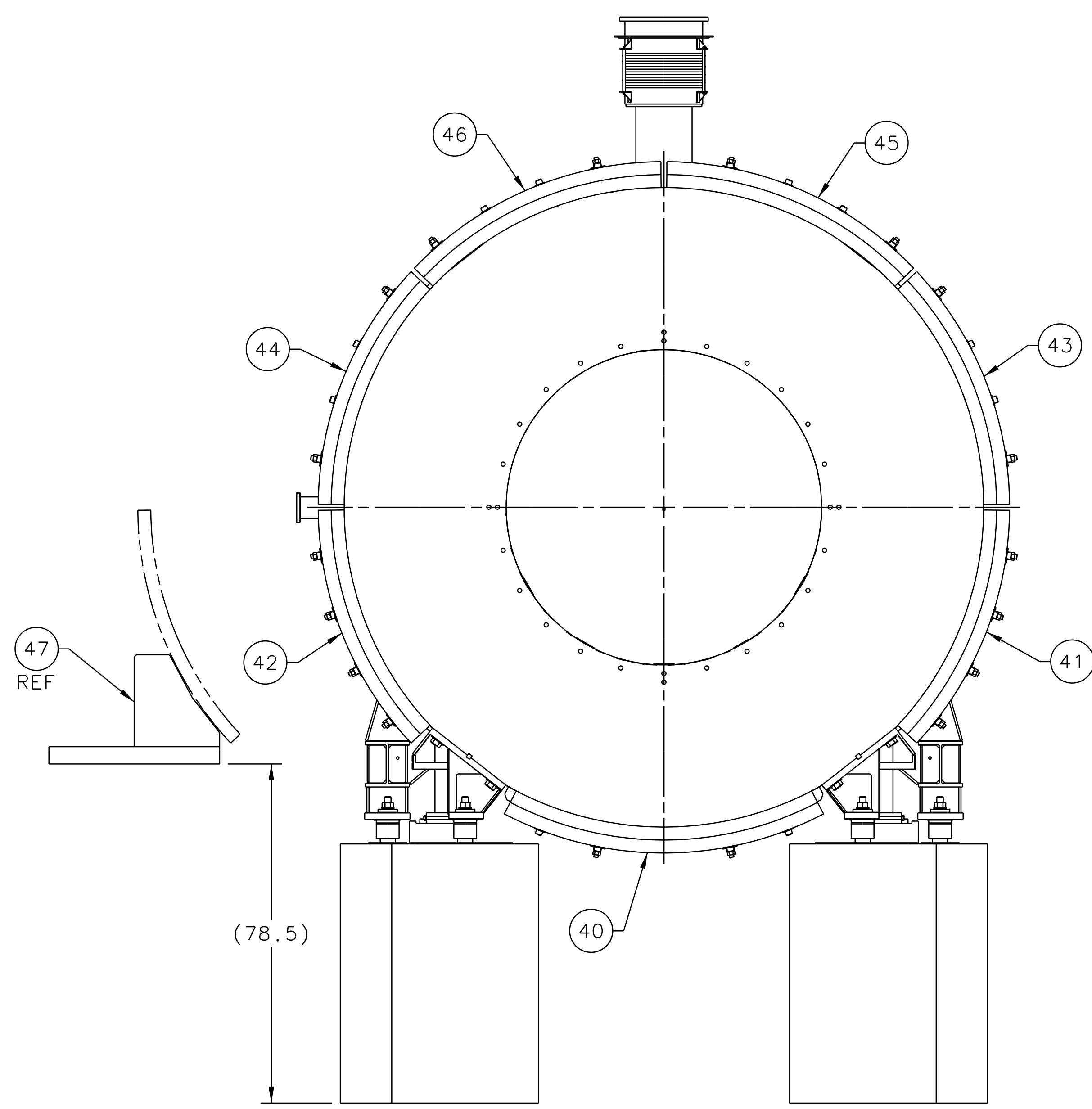
VIEW D  
INNER CLADDING



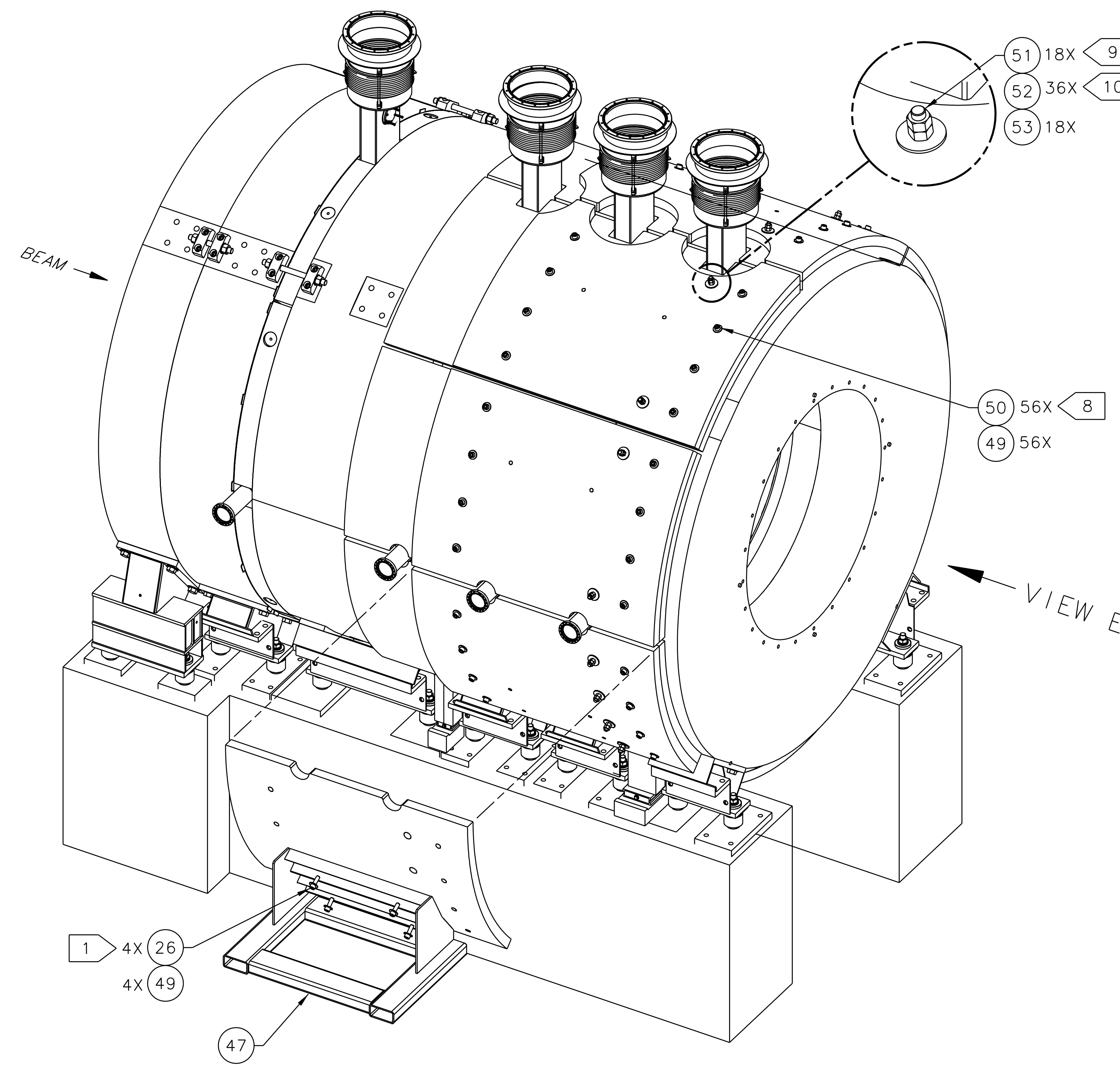
INNER CLADDING



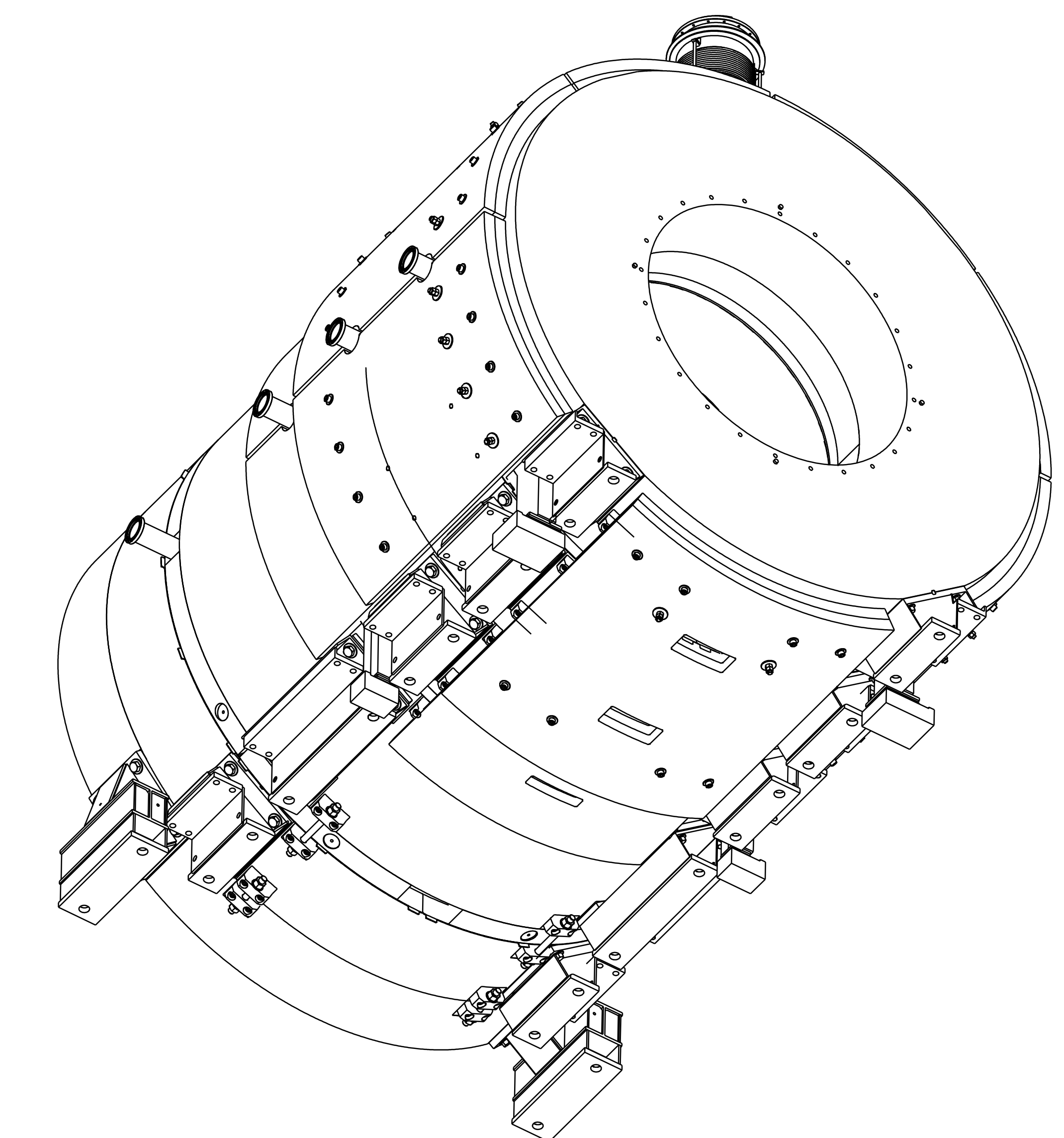
INNER CLADDING  
BOTTOM VIEW - PIER REMOVED



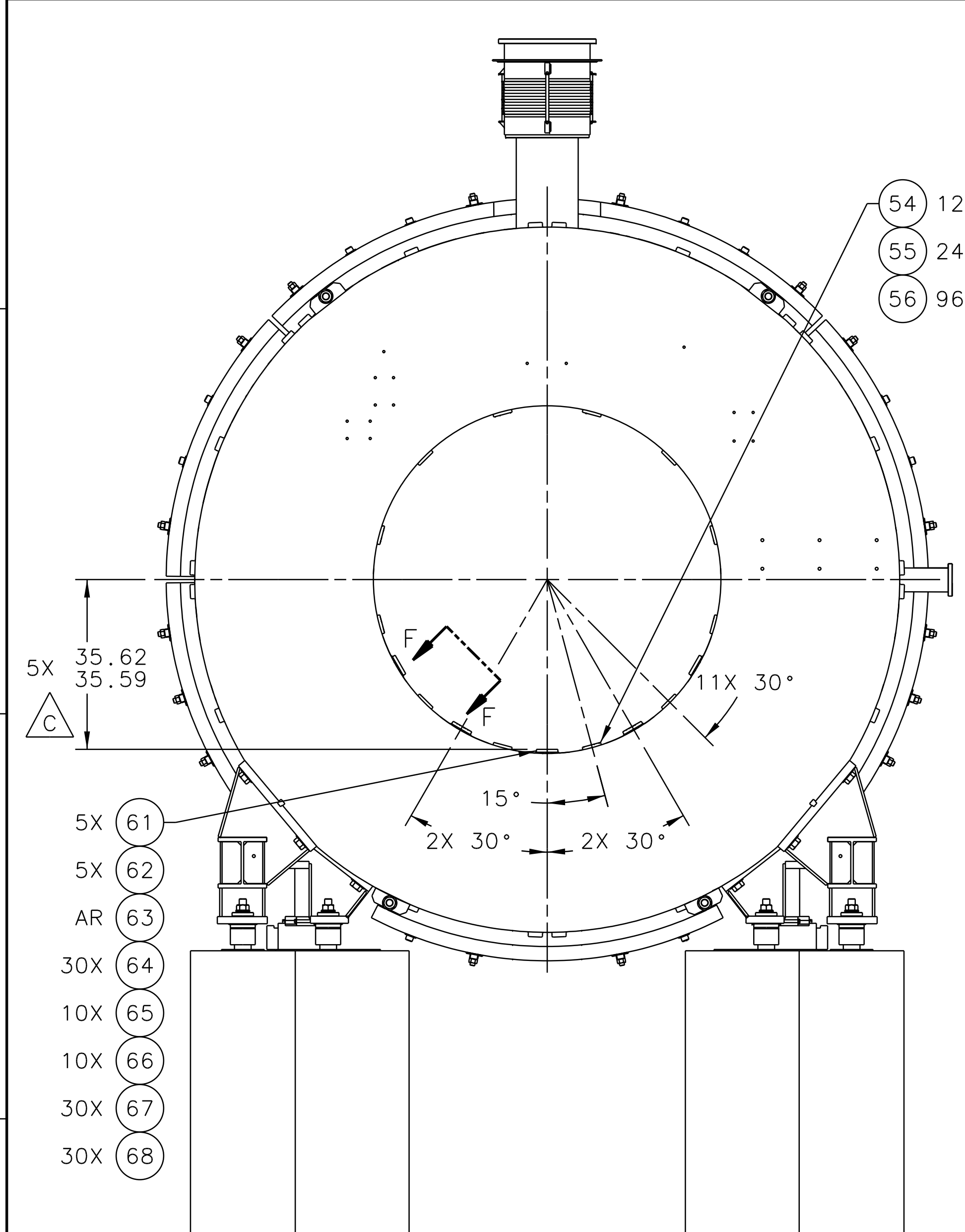
VIEW E  
OUTER CLADDING



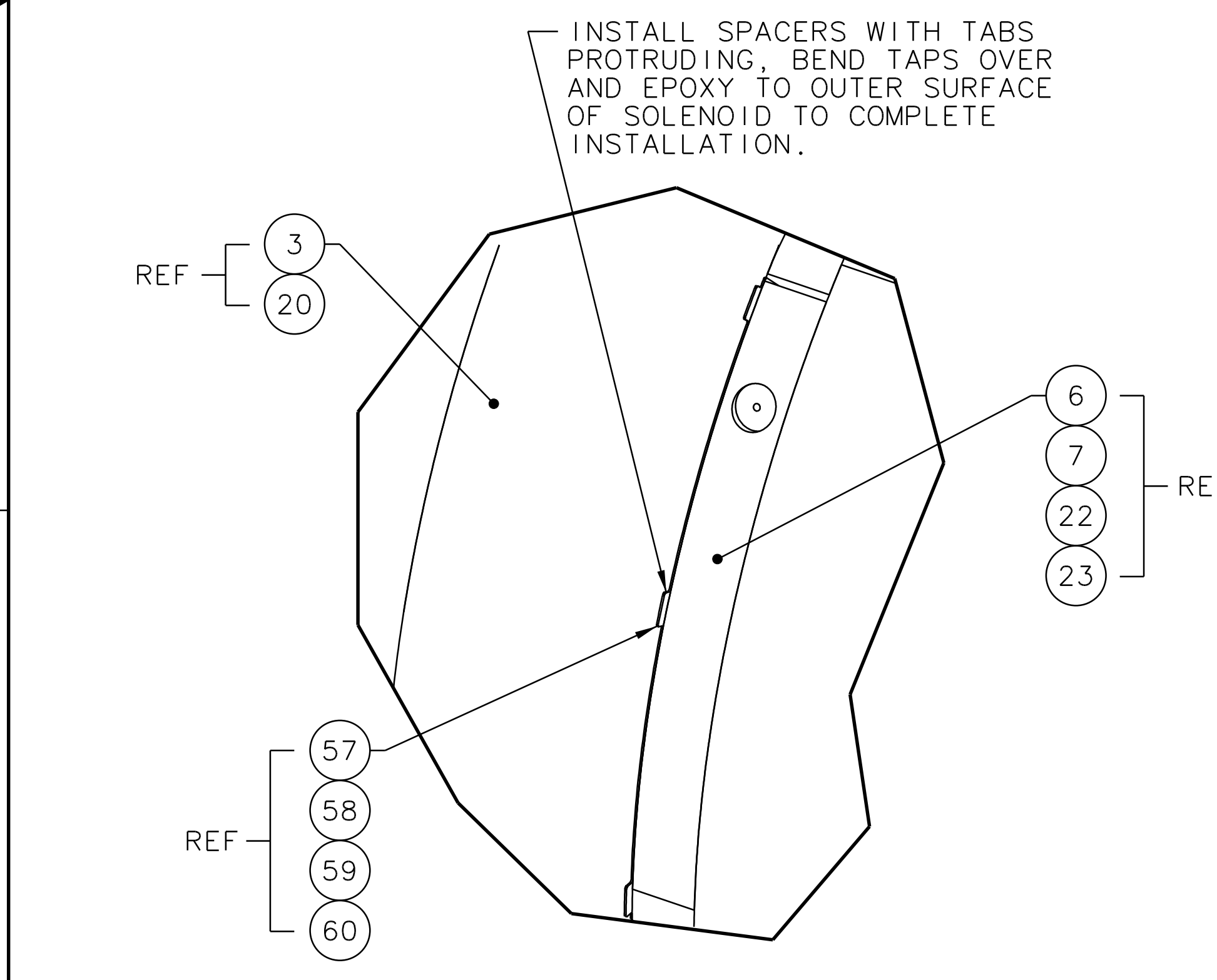
OUTER CLADDING



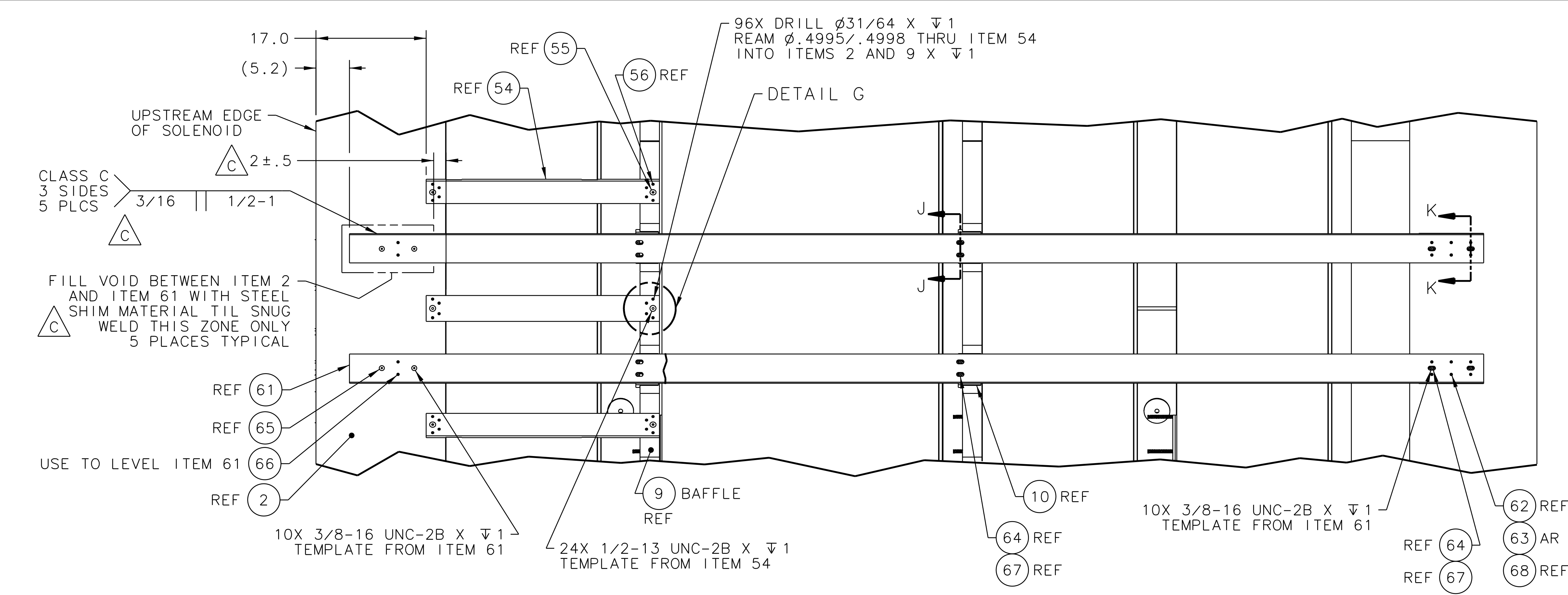
OUTER CLADDING  
BOTTOM VIEW - PIER REMOVED



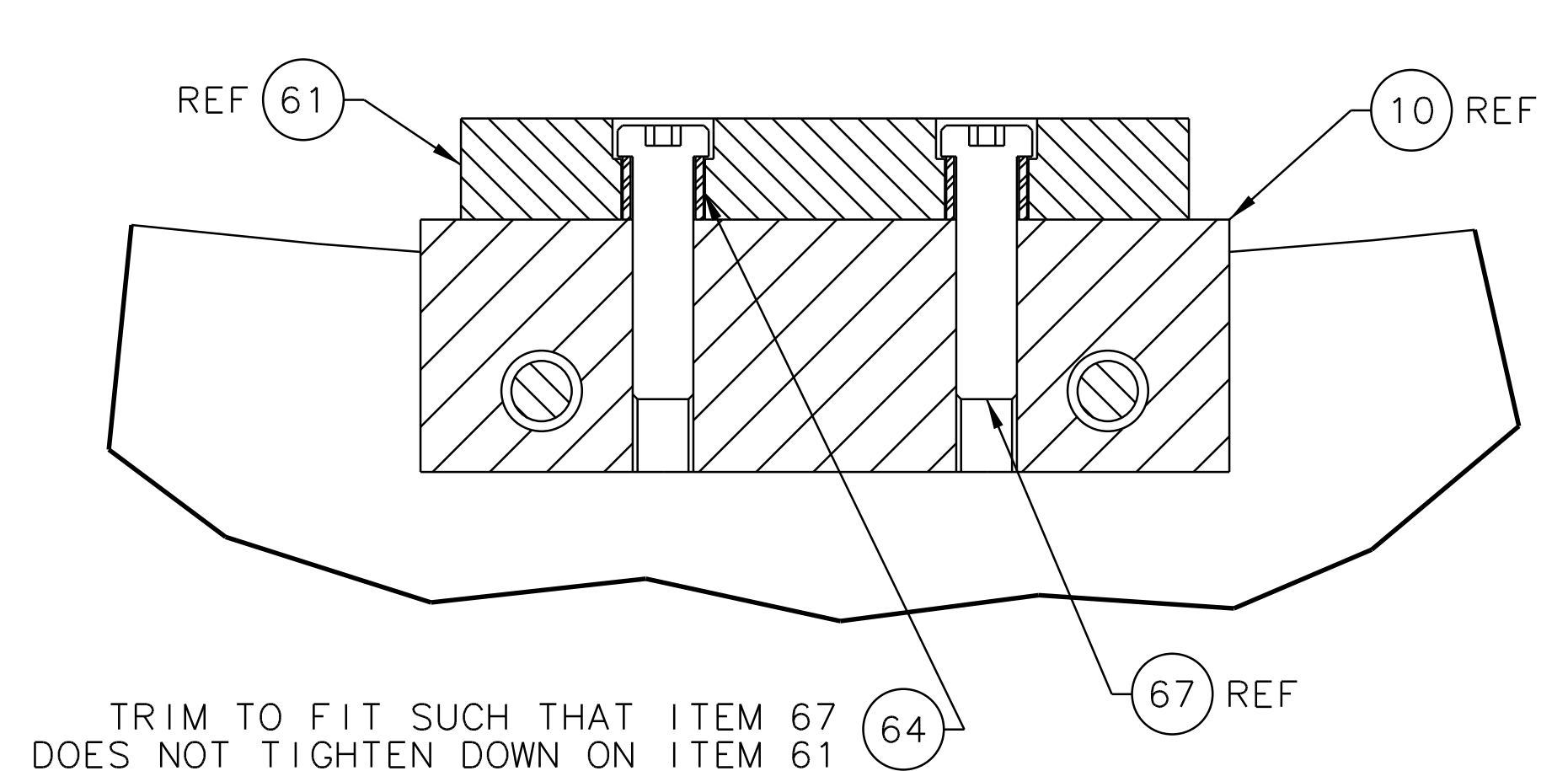
FRONT VIEW  
BAFFLE REINFORCEMENT STRAPS  
& BCAL GUIDE RAILS



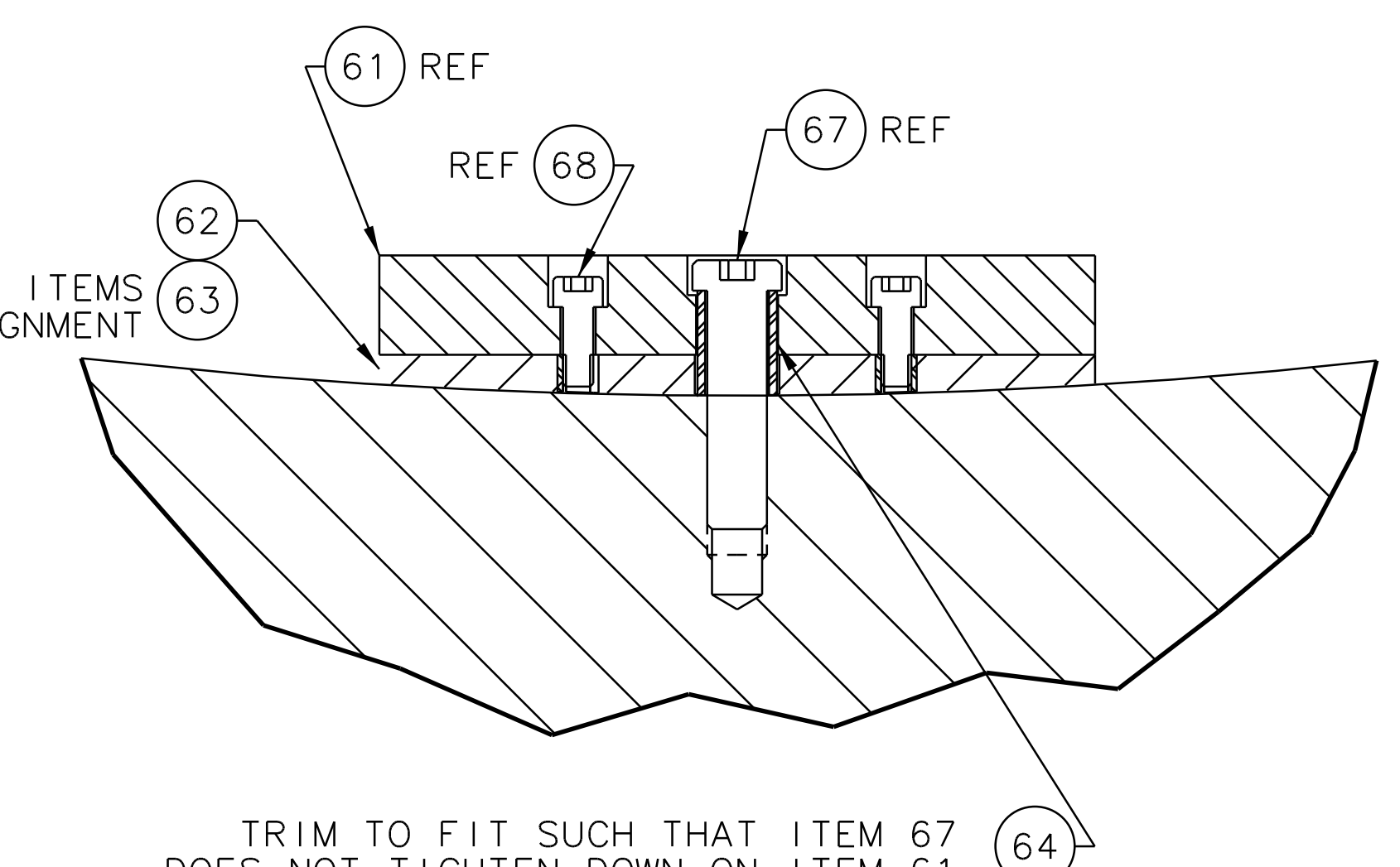
DETAIL H  
SCALE 1:10  
(2-6H)



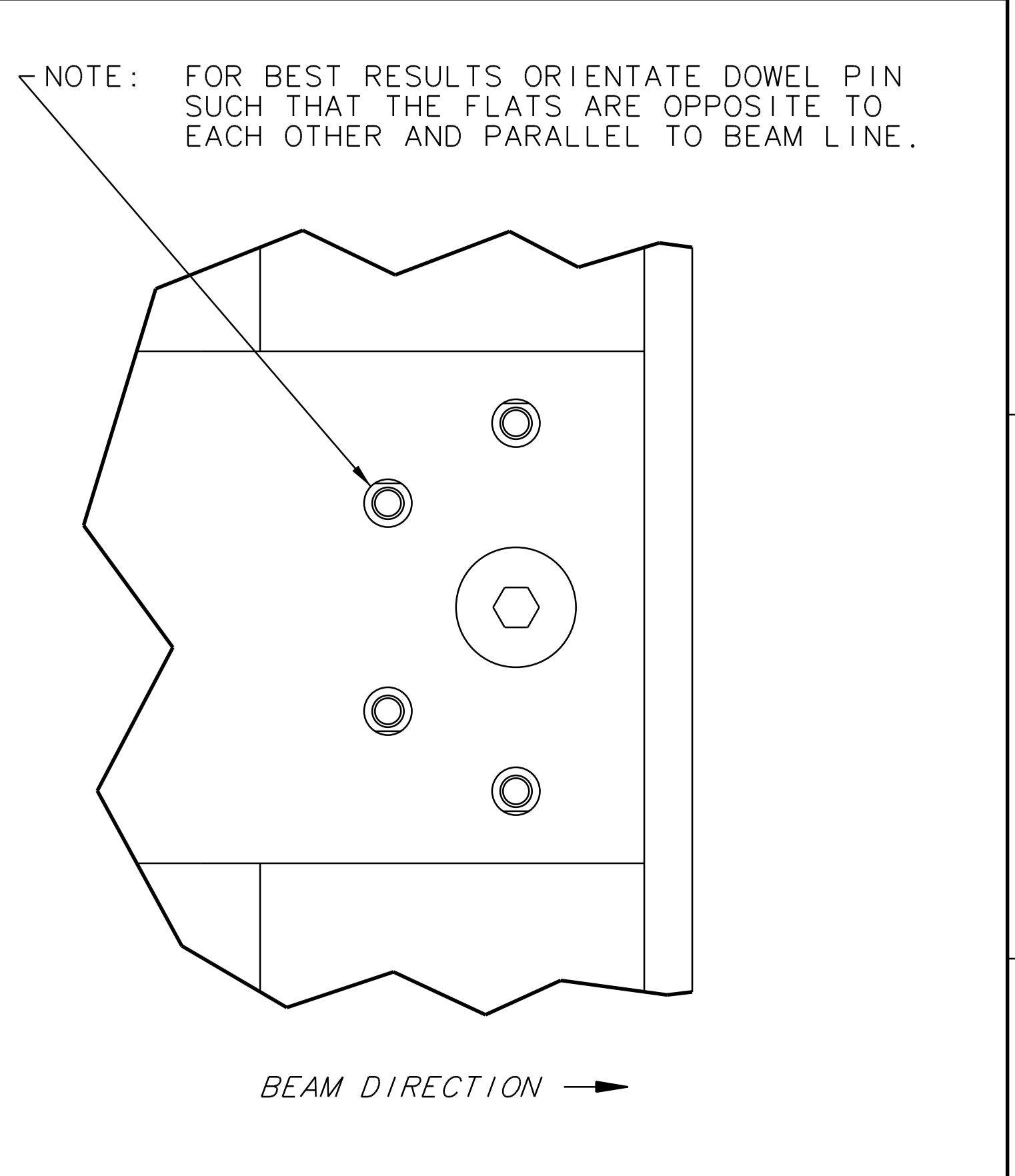
SECTION F-F  
SCALE 1:10  
ROTATED 45° CCW



SECTION J-J  
SCALE 1:1  
ROTATED 60° CW  
(TYP AT RAIL CLEATS)



SECTION K-K  
SCALE 1:1  
ROTATED 60° CW  
(TYP AT DOWNSTREAM END)



DETAIL G  
SCALE 1:1

- NOTES: (CONTINUED FROM SHEET 1)
- 7. APPLY LOCTITE 2047 TO THREADS AND TORQUE TO 350 FT-LB.
  - 8. LUBRICATE THREADS WITH ANTI-SEIZE AND TORQUE TO 350 FT-LB.
  - 9. LUBRICATE THREADS WITH ANTI-SEIZE AND TORQUE STUDS TO 100 FT-LB.
  - 10. INSTALL INNER NUT FINGER TIGHT. INSTALL OUTER NUT AND TORQUE TO 100 FT-LB. PREVENT INNER NUT FROM ROTATING WHILE APPLYING TORQUE TO OUTER JAMNUT.
11. SUGGESTED SOURCE OR JLAB APPROVED ALTERNATE:
- |  |   |
|--|---|
| MSC INDUSTRIAL SUPPLY CO.<br>(800) 645-7270<br>WWW.MSCDIRECT.COM | MCMaster-CARR<br>(609) 689-3415<br>WWW.MCMaster.COM |
|--|---|

ITEM NO.	QTY	PART OR IDENTIFYING NO.	DESCRIPTION OR SPECIFICATION	MATERIAL	NOTES
30	68	ASTM A574 OR EQUIV	SOCKET HEAD CAP SCREW, #10-24 UNC-3A, 1/2 LG	STEEL, ZINC PLATED	
30	67	ASTM F835 OR EQUIV	LOW HEAD SOCKET CAP SCREW, 3/8-16 UNC-3A, 1-1/2 LG	STEEL, ZINC PLATED	
10	66	ASME B18.3 OR EQUIV	OVAL POINT SET SCREW, 3/8-16 UNC-3A, 3/4 LG	STEEL	
10	65	ASTM F835 OR EQUIV	FLAT HEAD SOCKET CAP SCREW, 3/8-16 UNC-3A, 1-3/4 LG	STEEL, ZINC PLATED	
30	64	D00000-04-02-2166	BCAL RAIL - PIPE SPACER		
AR	63	MCMaster CARR 9302K013	SLOTTED SHIM, .005" X 1-1/2" SQ TRADE SIZE AA	ALUMINUM	11
5	62	D00000-04-02-2164	BCAL RAIL - CONTOURED SHIM		
5	61	D00000-04-02-2127	GUIDE RAIL - BCAL		
8	60	D00000-04-02-2160-05	YOKE SPACER - 14GA		
2	59	D00000-04-02-2160-03	YOKE SPACER - 12GA		
4	58	D00000-04-02-2160-02	YOKE SPACER - 11GA		
2	57	D00000-04-02-2160-01	YOKE SPACER - 10GA		